

Multicultural Engineering Program (MEP) Website Redesign, 2014 - 2015 AMI Project

Cathy Van Tassel
Chevron Center of Research Excellence, Department of Geology and Geological Engineering
Colorado School of Mines



Project Purpose

The Colorado School of Mines (Mines) is a highly selective research university devoted to engineering and applied science. Mines serves ~5,400 undergraduate and graduate students, is home to 50 unique research centers, and offers terminal degrees in 20+ specializations. Within this context, the Multicultural Engineering Program (MEP) provides support that contributes to the recruitment, retention, graduation, and professional development of historically underrepresented students, staff, and faculty at Mines.

Project Description

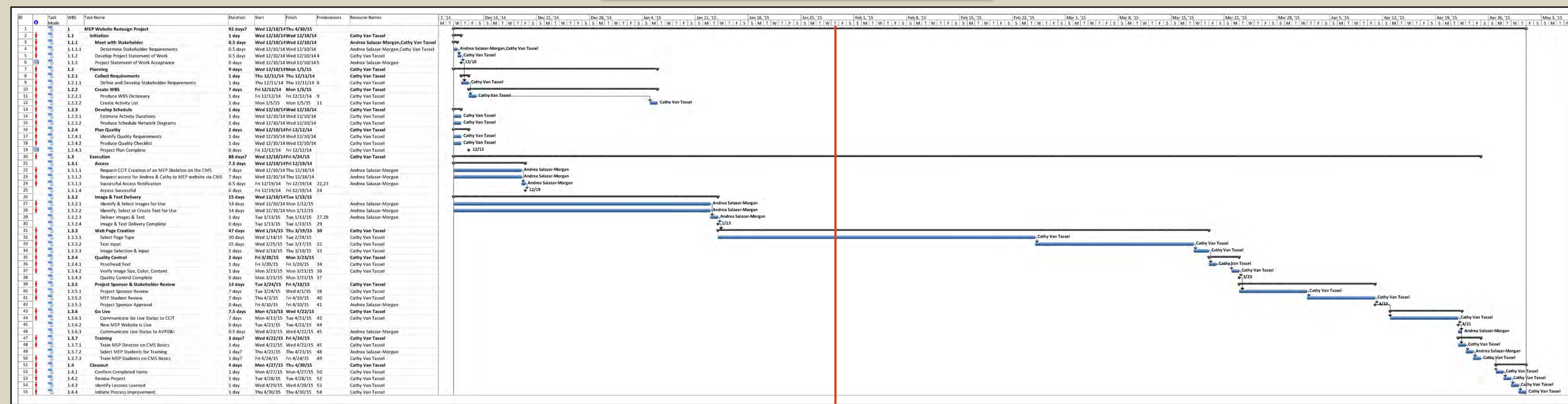
Redesign and development of the MEP website using the Mines content management system, SavviCMS. Specifically reworked to appeal to prospective students, parents of prospective students & high school counselors.

Project deliverables:

- High-quality website which includes:
 - 1) error free text;
 - 2) text which accurately describes MEP today and reflects the vision for MEP's future;
 - 3) high-quality images of MEP students, programs and services;
- Basic Content Management System (CMS) training for the MEP Director for routine updates;
- Basic CMS training for MEP student assistants or student organization leaders for routine updates.

Project Sponsor: Andrea Salazar-Morgan, MEP Director

Project Schedule



Project Milestones

Summary Milestones	Due Date	Date Accomplished
Preliminary Project Statement of Work Delivered	12/10/2014	12/10/2014
Preliminary Project Plan Delivered	12/10/2014	12/10/2014
Project Statement of Work Acceptance	01/07/2015	01/07/2015
Project Plan Complete	12/12/2014	12/12/2014
CCIT Access Granted	01/16/2015	01/07/2015
Proposed Images & Text Delivered to Cathy	01/13/2015	01/23/2015
Project Sponsor Review of Website	Begins 03/24/2015	
MEP Student Review of Website	Begins 04/02/2015	
Project Sponsor Approval	04/10/2015	
New Website is Live	04/21/2015	
Basic CMS Training	Begins 04/22/2015	
Project Closeout Begins	04/27/2015	
Project Closed	04/30/2015	

Expected Results

The redesigned MEP website will:

1. Readily engage:
 - prospective students,
 - parents of prospective students, and
 - high school counselors;
2. Provide accurate and timely MEP information to users;
3. Focus user attention on MEP programs, services, and events;
4. Highlight professional societies which MEP supports on campus;
5. Provide a seamless gateway to OrgSync, the campus portal for student organizations;
6. Be easy for the MEP Director to maintain and update as needed.

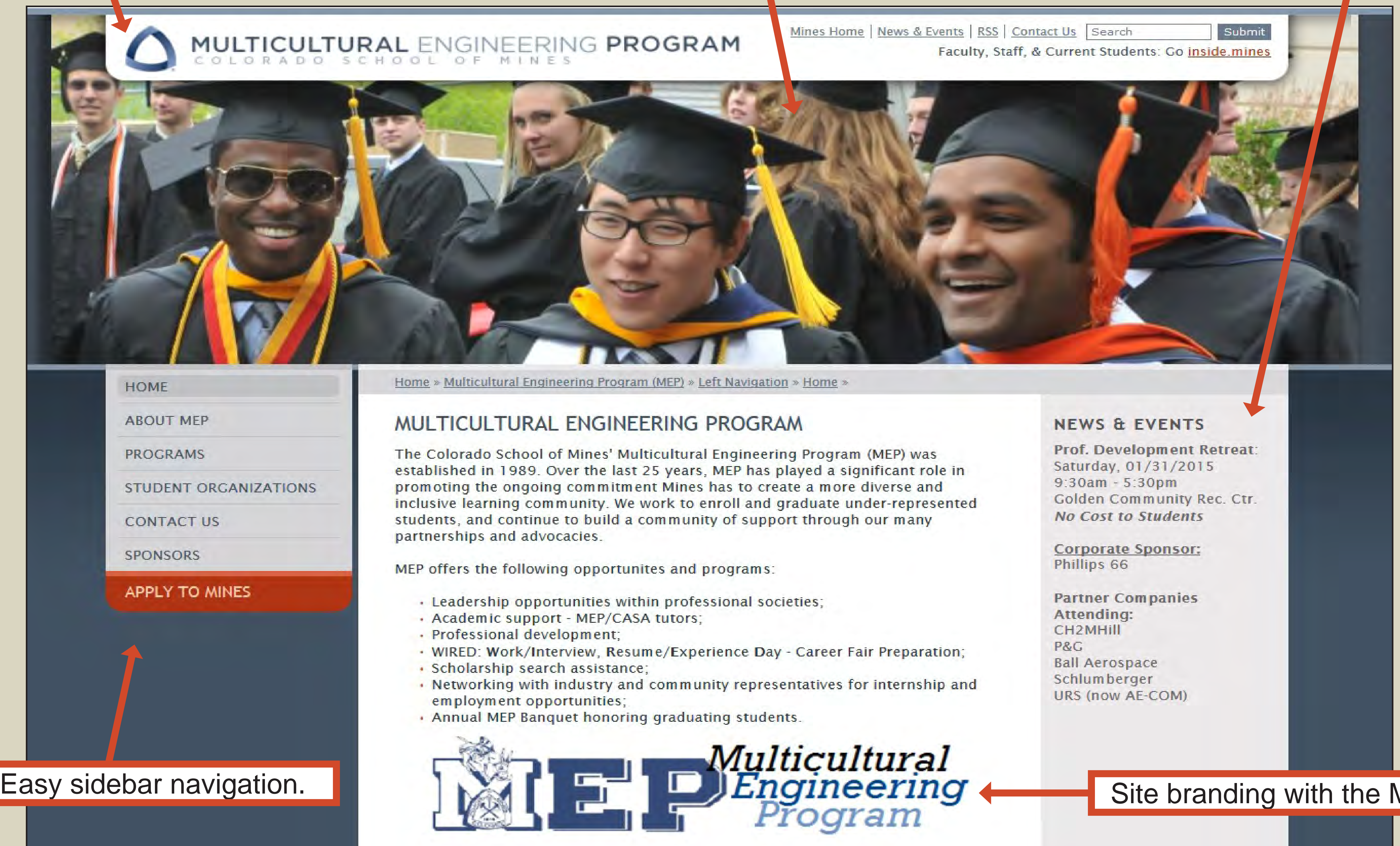
Project Requirements

- Website design and MEP banner which both conform to Mines' graphic and website standards as outlined by the Public Relations and Computing, Communications, and Information Technologies (CCIT) departments.
- Site branding with the MEP logo.
- Image and document storage within the CMS that conforms to established CCIT structure.
 - Chosen image size & quality will provide for the best quality images at the fastest loading speed.
- Image and document storage backup on the MEP server or computers.
 - Image backup files will be stored in both Master and Access size and quality.
 - Documents will be stored in: original format, PDF & optimized PDF.

Website header which conforms to campus graphic standard.

High-quality image of MEP students.

Easily updated 'News & Events' section.



Easy sidebar navigation.

Site branding with the MEP logo.

Acknowledgements

- Funding for Cathy Van Tassel's time to work on this project has generously been provided by the Colorado School of Mines' Chevron Center of Research Excellence (CoRE), which is fully funded by the Chevron Energy Technology Company.
- Cathy gratefully acknowledges the support of the Department of Geology and Geological Engineering for the release time to work on this project.
- Cathy is grateful for the support of Ms. Debra Lasich, Associate Vice President for Diversity and Inclusion, and Ms. Steph Berry, Director of WISEM, whose offices generously supported Cathy's participation in the Academic Management Institute (AMI)
- Additionally, Cathy gratefully acknowledges Dr. Bill Scoggins, President, Colorado School of Mines, who approved her participation in AMI during the 2014-2015 year.

